



ENVI ONEBUTTON™ UAS ÉS LÉGI FELVÉTELEK FELDOLGOZÁSA

KÁKONYI GÁBOR, GEOIQ KFT.

+36 30 931 0626.

[HARRIS.COM](https://www.harris.com) | [#HARRISCORP](https://twitter.com/HARRISCORP)

HARRIS® TECHNOLOGY TO CONNECT,
INFORM AND PROTECT™



ENVI and ENVI OneButton products provide customers with an end to end solution to analyze UAV and aerial imagery

ENVI OneButton™

- Easily orthorectify and georeference aerial and UAV data
- Requires no training in photogrammetry
- Integrated with ENVI

ENVI OneButton Professional

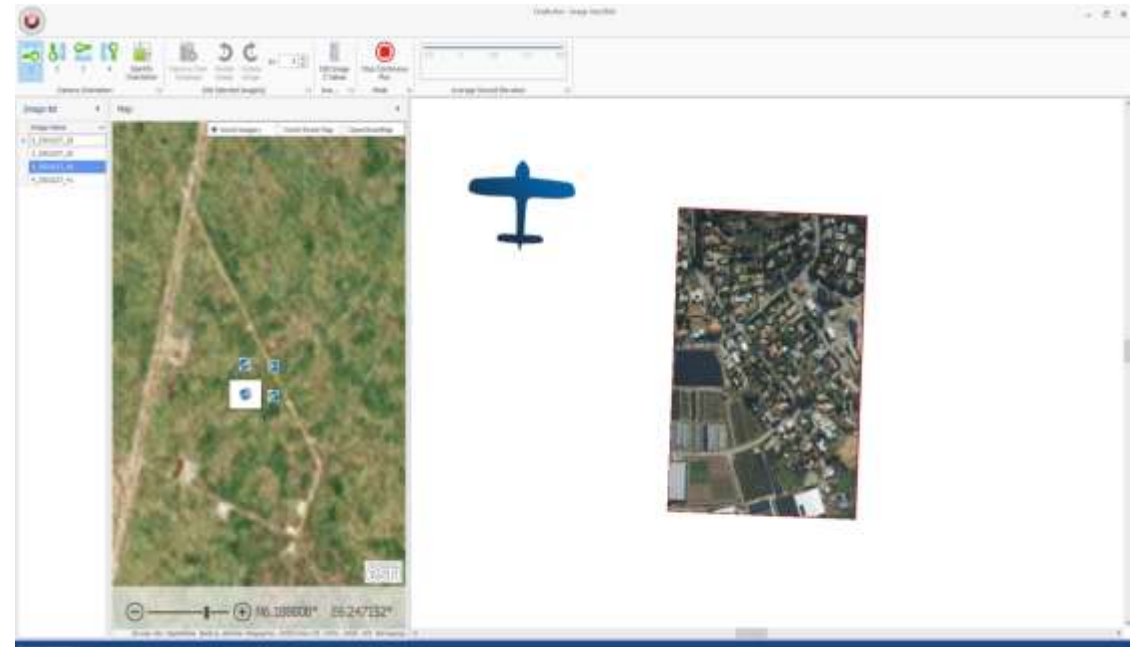
- Includes all OneButton™ Automation
- Fine tune image matching
- Complete control over the photogrammetric process
- Advanced editing & QA modes
- Integrated with ENVI



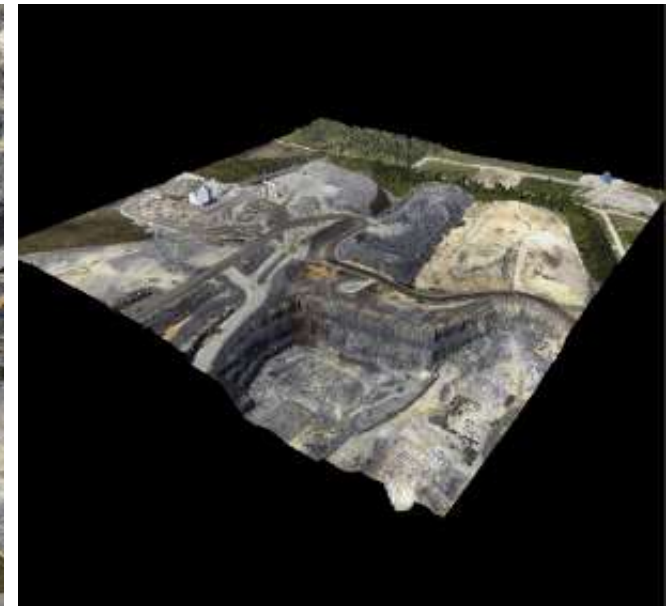
ENVI OneButton™ Features



- Supports ground control points (GCPs)
- Indifferent to camera, lens, and camera angles
- Supports all format sensors for efficient coverage of large areas
- Supports multispectral and multiband imagery
- Precise positioning of nadir and oblique imagery
- Uses GPU and multiple cores for very fast processing
- Processing report



- GeoTIFF OrthoMosaic
- Rapid GeoTIFF OrthoMosaic
- Approximate DTM
- 3D Sparse Point Cloud
- 3D Dense Point Cloud
- Esri Mosaic Dataset
 - Publish to ArcGIS Server
 - Publish to ENVI Services Engine



- Project Statistics
- Processing Results
- Snapshots of Mosaic & DEM
- Quality metrics of point correlation
- Drag and drop the results into ENVI
- Enhance results with OneButton Professional

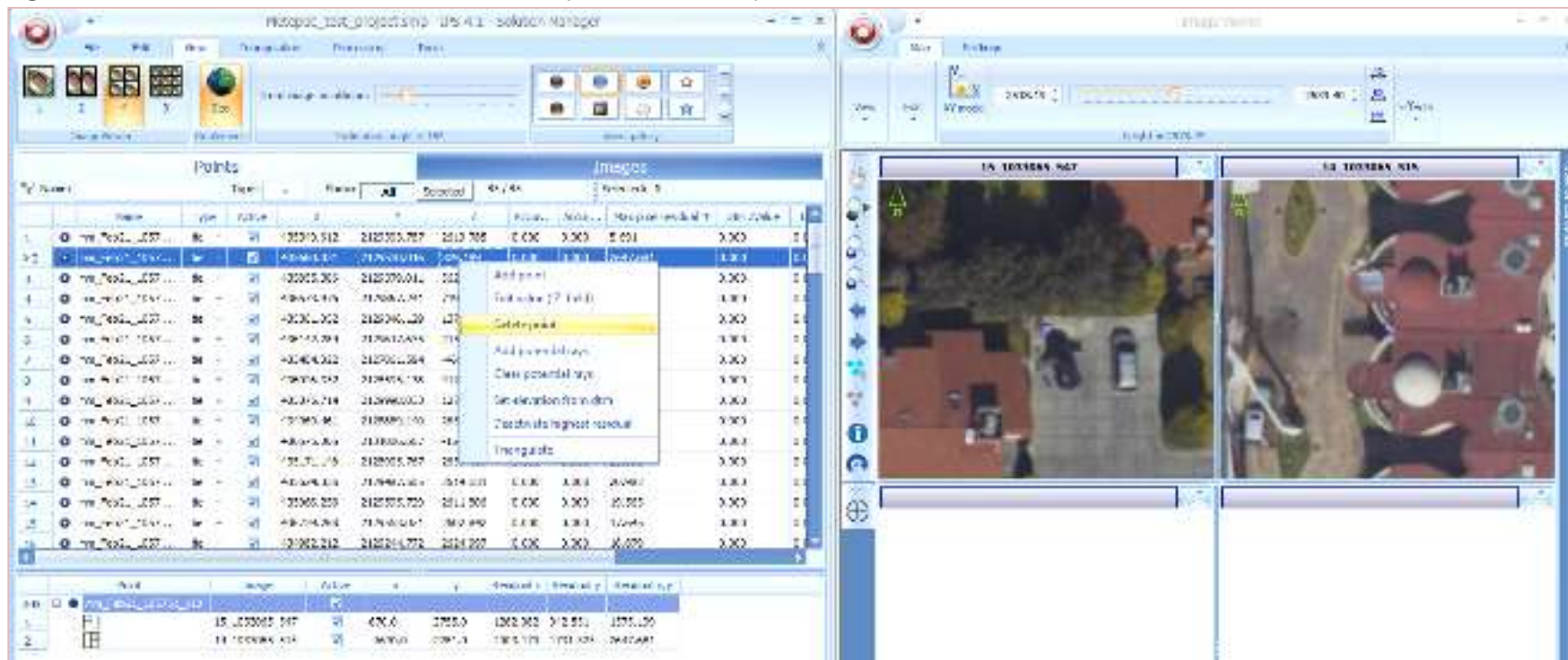
Icaros OneButton Processing Report

Project properties	
Project name	tetracam_5bands_v42084
Project type	Agriculture
Project area	0.0182 km ² / 0.007 sq. mile
Ground sampling distance (GSD)	6.64 cm/pixel / 2.62 inch/pixel
Sensor type	Multi Spectral (Multipage Tiff)
Camera make	TETRACAM INC.
Camera model	Tetracam MCA
Input spatial reference	WGS 84
Output spatial reference	WGS 84 / UTM zone 11N

Processing results	
Processing start time	Jan 11, 2016 10:10:37 PM
Processing end time	Jan 11, 2016 10:13:57 PM
Total processing time	00h:03m:20s
Processing result	Process completed successfully
Image size (pixels)	1280 x 1024
Number of images processed	11 out of 11 images
Number of control points	0
Total number of matched points	290
Mean reprojection error (pixels)	2.6323

The left image is a grayscale point cloud or DEM visualization showing terrain features. The right image is a color-coded map or heatmap with a vertical color scale on the right side ranging from 178m to 198m.

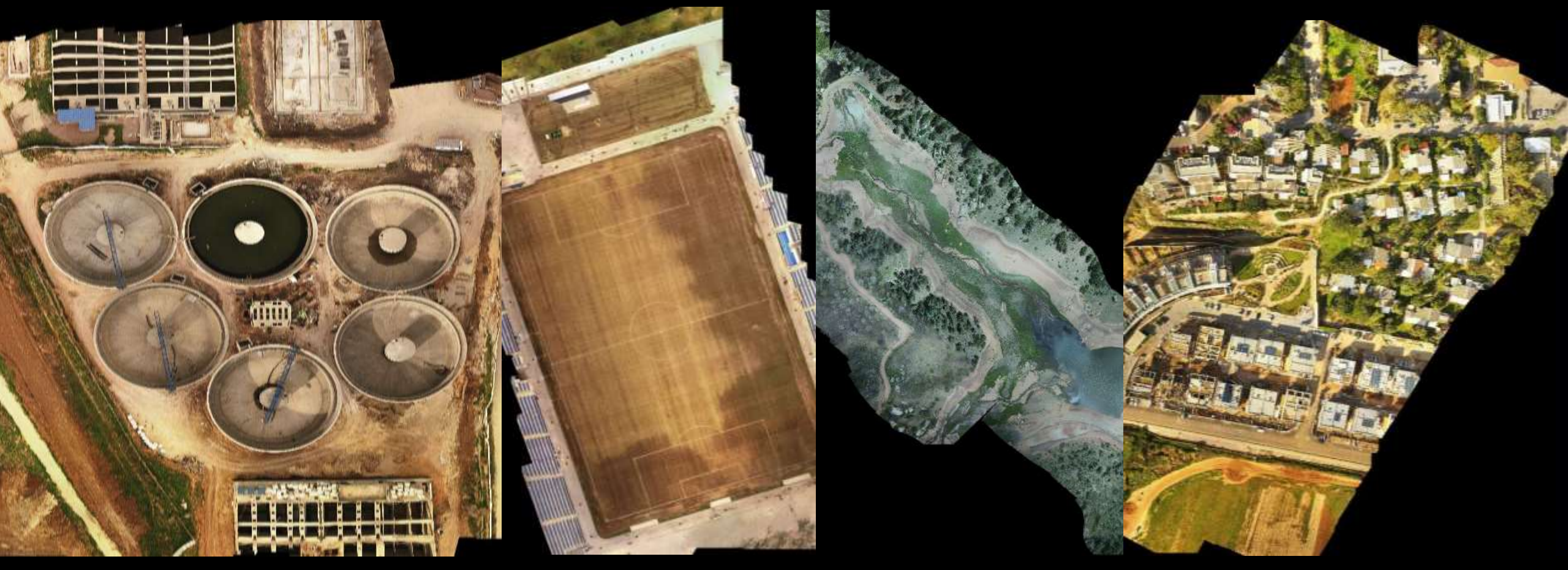
- All of the automatic processing included with ENVI OneButton™
- Complete control over the photogrammetric process
- Support for large orthomosaics
- Geoclipboard
- Real time progress, auto-save and recovery capability



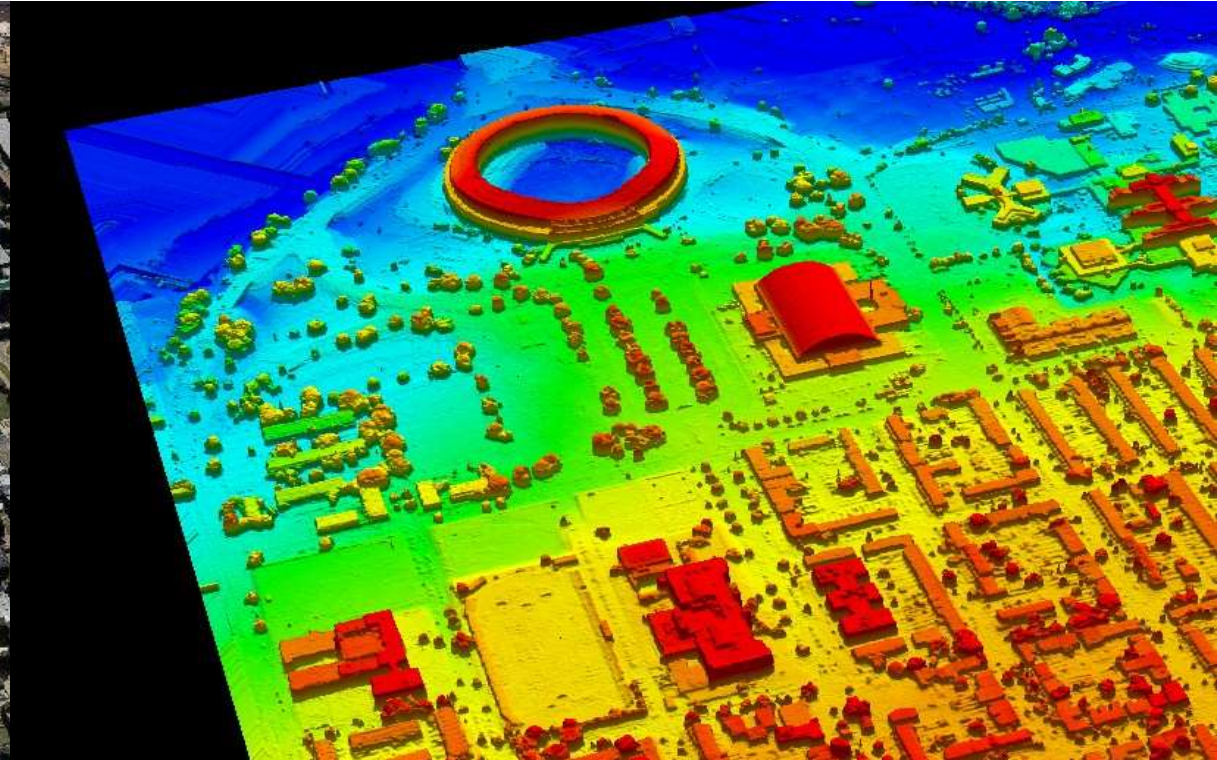
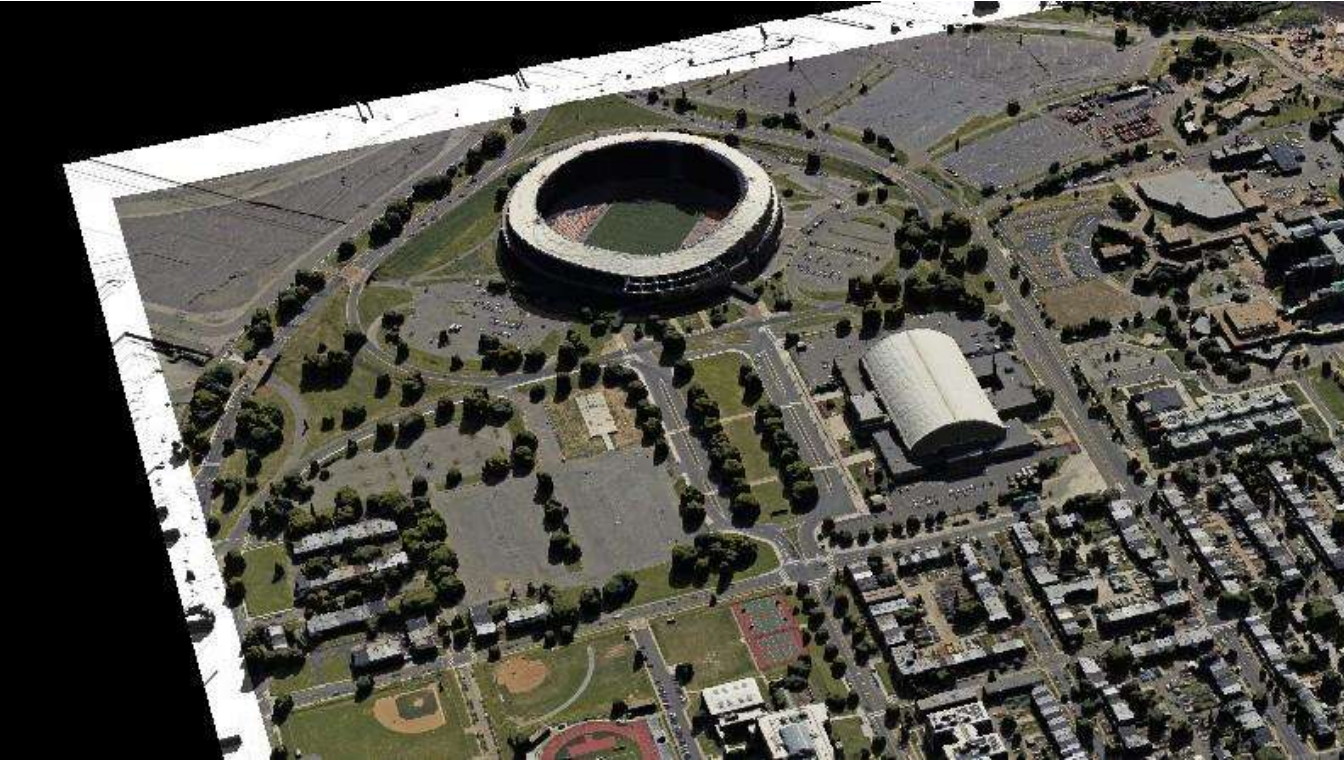
Generate Aerial Imagery Products



Orthomosaics



Digital Elevation Models



True Color 3D Point Clouds



- Supports aerial and UAV collection platforms
- Ability to process tens of thousands of images
- New, high quality imagery to extend advanced analytics of ENVI

