



BLOMURBEX

the largest geo-database in Europe

Gabor Kakonyi, Jan Sirotek



- Company introduction
- Pictometry ® - oblique images
- Changing of the concept of data delivery
- Blom URBEX



Company introduction

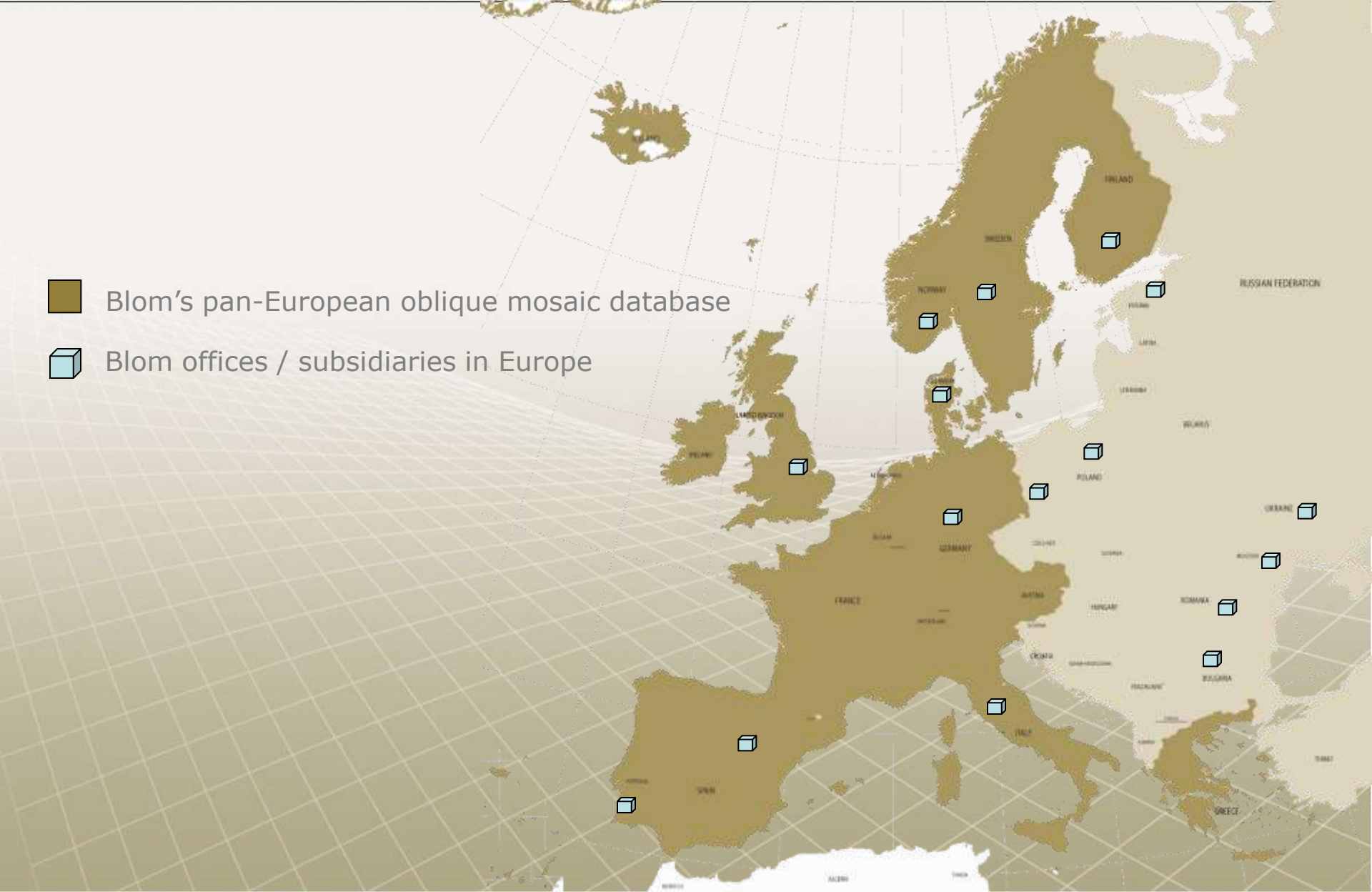
- One of Europe's largest airborne survey companies
- Offices in 12 European countries
- Head Office located in Oslo
- Business concept:
 - Aerial Photography & Laser Scanning
 - Mapping & Modeling – creating & maintaining in databases
 - Navigation systems & Location Based Services
- Market Cap: App. 275 million Euro (May 5 2008)
- Guidance revenues 2008: exceeding Euro 135 million
- Listed on Oslo Stock Exchange (ticker BLO)
- Access to Capital Markets
- Customers: Government, private and public businesses, consumers

Blom Group Offices in Europe



 Blom's pan-European oblique mosaic database

 Blom offices / subsidiaries in Europe



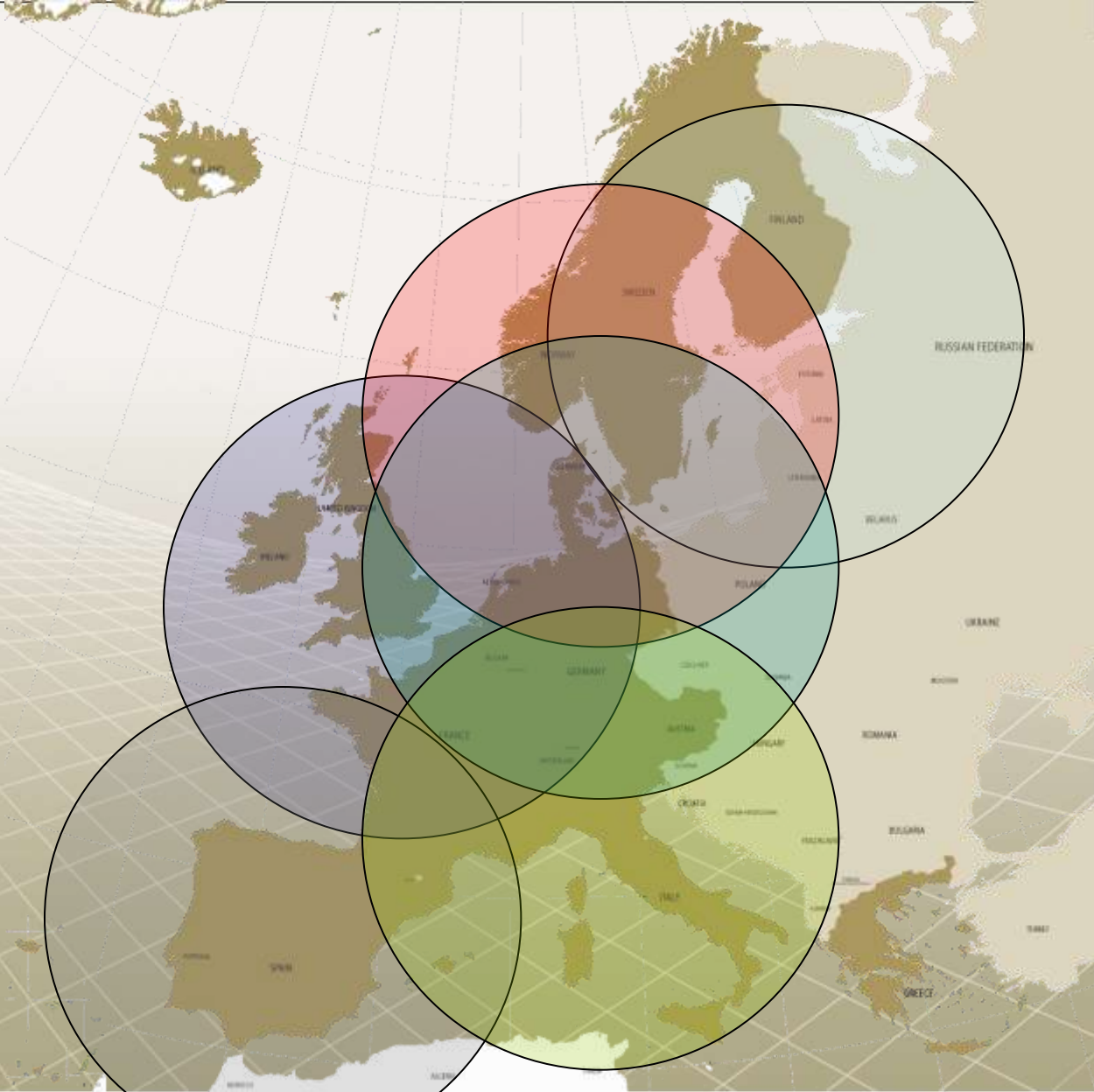
- Blom operates
 - 33 planes and 4 helicopters
 - 9 high-tech lasers, 1 multispectral scanner
 - 20 orthophoto cameras & 55 oblique imagery cameras
 - Software applications and storage capabilities
- More than 1,200 highly qualified employees
- Volume & cost-effective production facilities in Romania & Indonesia
- Exclusive distribution agreement for patented oblique imagery technology for 23 countries in Western Europe through 2015
 - Microsoft MSN first customer (5-year contract)
 - Expanding into Eastern Europe since 2008



European aircraft coverage



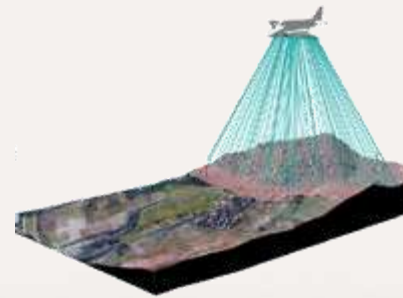
3 hours from base



Blom Group Business Areas



Aerial photo



Laser scanning



Mapping & modelling



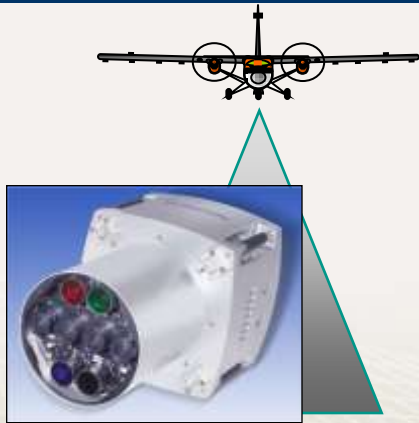
Databases



Navigation & Location Services

Line of products and services

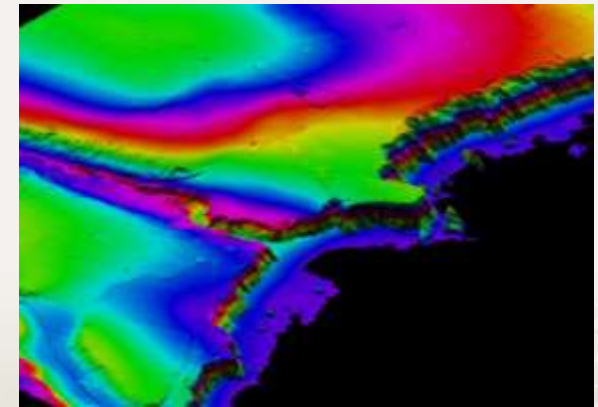
Aerial photo



Vector Maps



Digital Terrain and Surface Mapping



Ortho Image



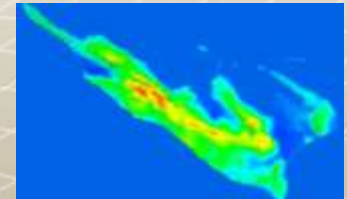
Oblique Images



3D Models

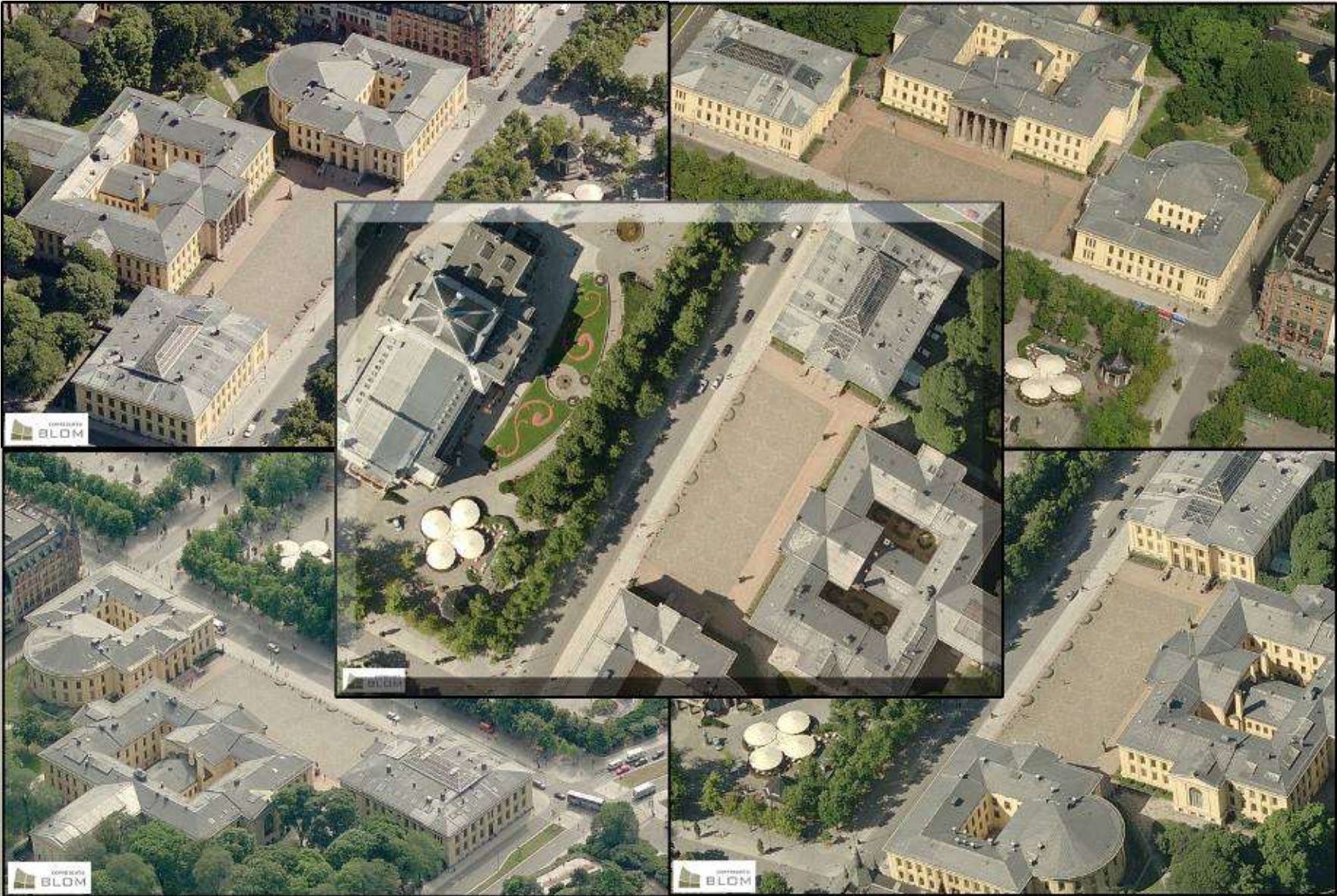


- Libraries captured and owned by Blom to be sold on a licensing basis
- Oblique imagery database
- Terraltaly
 - Seamless digital colour orthophoto covering all of Italy
 - 50 cm resolution
 - Captured with digital camera Leica ADS40 and analogue Leica-Wild RC30
 - Homogenous coverage from 1999-2000
 - Regions updated every year from 2003
- DTM Denmark
 - DTM/DSM Denmark, produced from LIDAR
 - 1,5 m grid
 - 10-15cm accuracy
- Strategy is to increase focus on building own libraries, especially within oblique images and Orthophoto
 - Libraries under development
 - Digital aerial images and digital orthophoto from many cities throughout Europe
 - DTM/DSM covering different cities and regions in Europe



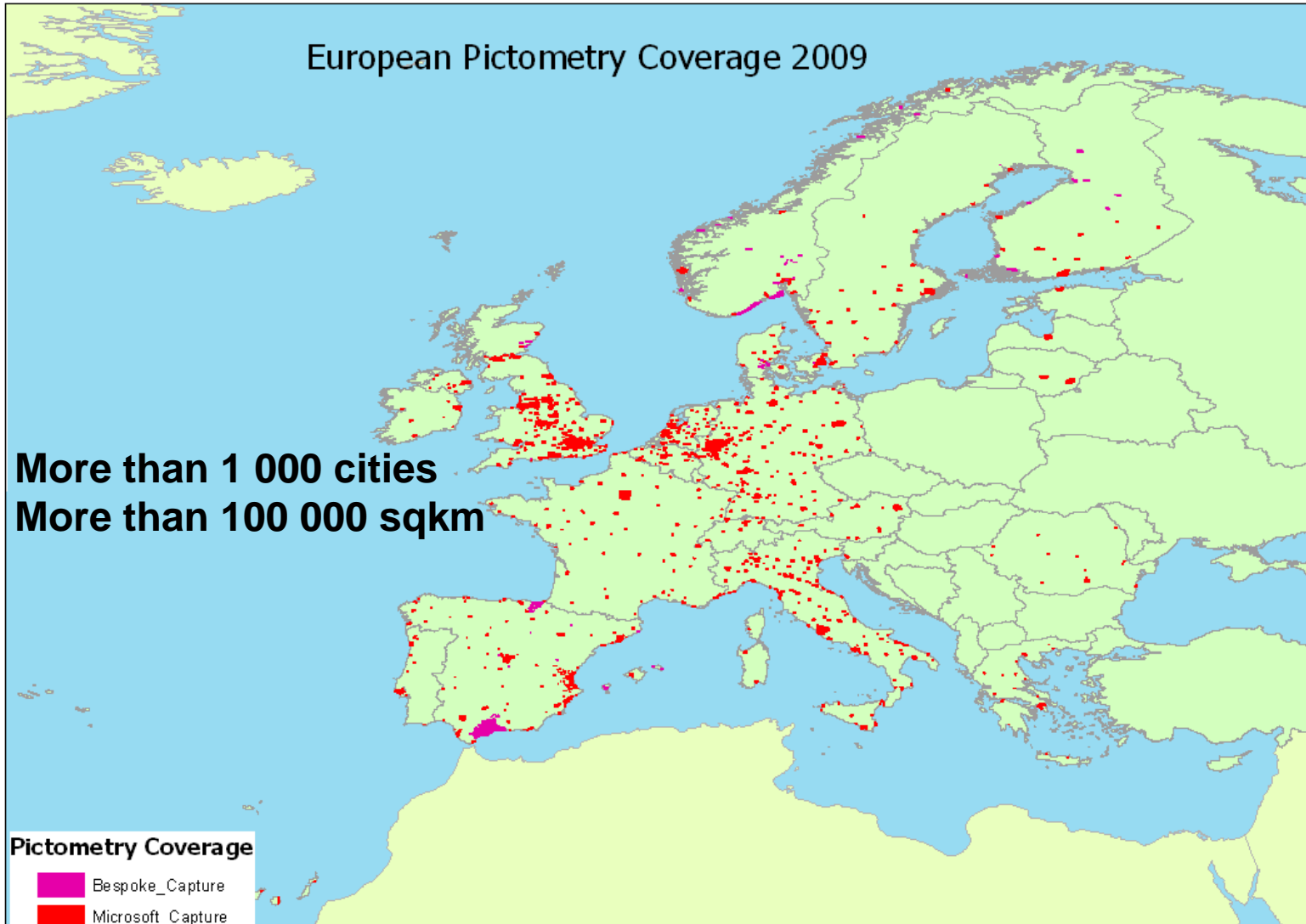
Pictometry[®] - Oblique images

Oblique Imagery



- Images normally captured with 10 cm resolution (3 000 feet flying height)
- Overlap between vertical images normally 60%
- Corner coordinates, exterior and interior orientation parameters available for all images
- DTM included in images
 - DTM from external sources
 - Accuracy of measurements in obliques will vary with quality of DTM
- Orthophoto in library rectified using existing DTM

Blom : Oblique coverage



- Exclusive distribution agreement for 23 countries in Western Europe through 2015
 - Covering app. 1,000 largest cities in Western Europe, total of 100 000 sqkm
 - Oblique (4 angles) and orthophoto images
 - Expand into Eastern Europe in 2008
 - Database updated every 2nd year
- Ortho and oblique mosaic
 - Seamless layers for the above mentioned cities
 - Resolution 0,15m
 - Accuracy ~1-2 m
- Microsoft MSN first customer
- Significant potential for applications and services, eg:
 - City planning
 - "Blue lights"
 - Web based mapping services
 - Car navigation
 - Telecommunication
 - 3D visualization



- Images are available through



or



Industry format Images + metadata

Libraries + EFS (Pictometry sw)
Libraries + plugin for GIS

or



Wireless & Wireline Access

API SDK Plug-Ins

PC



PDA



Laptop



Mobile



PND

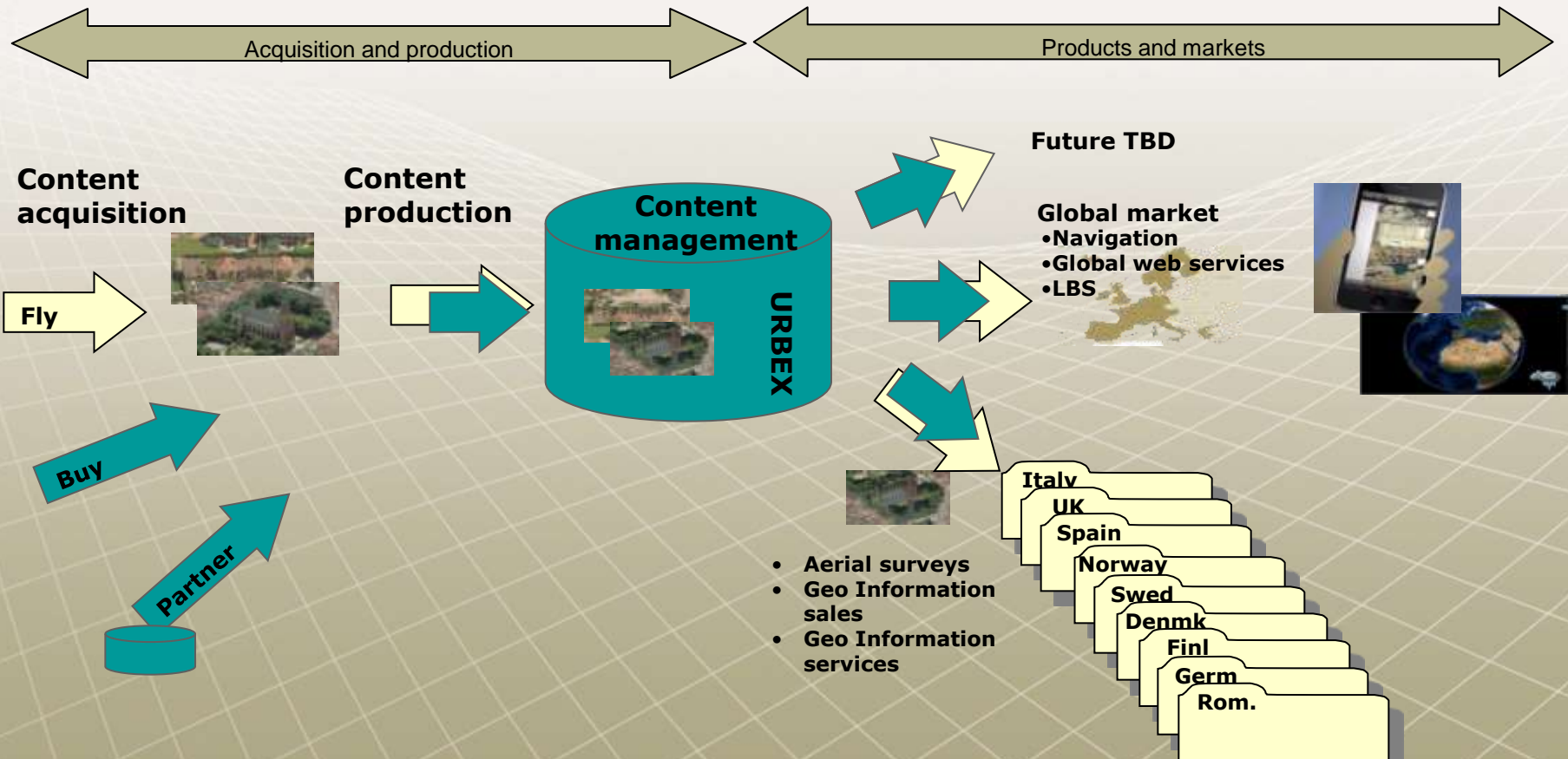


Changing of the concept of data delivery

Expanding value chain and market reach

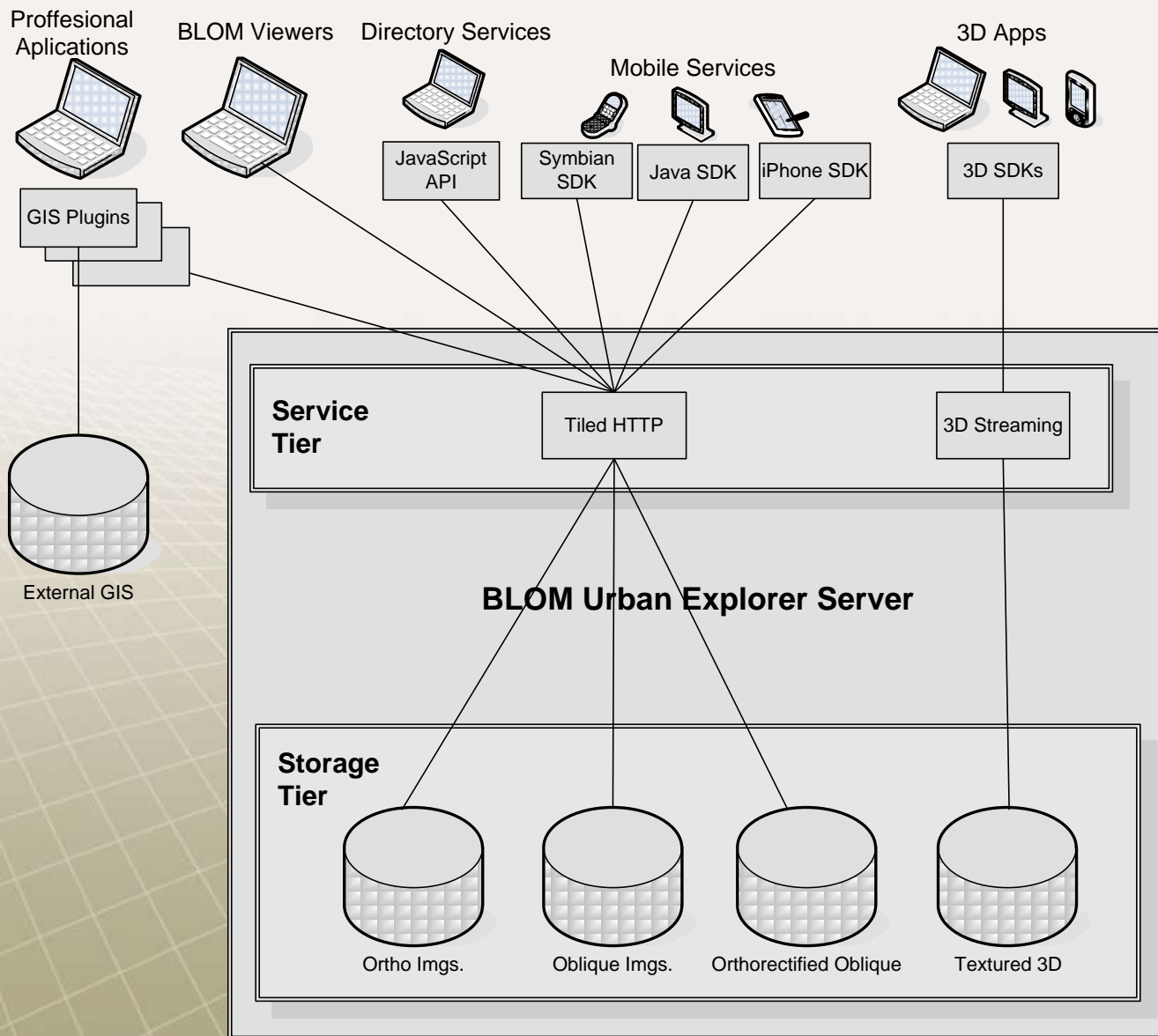


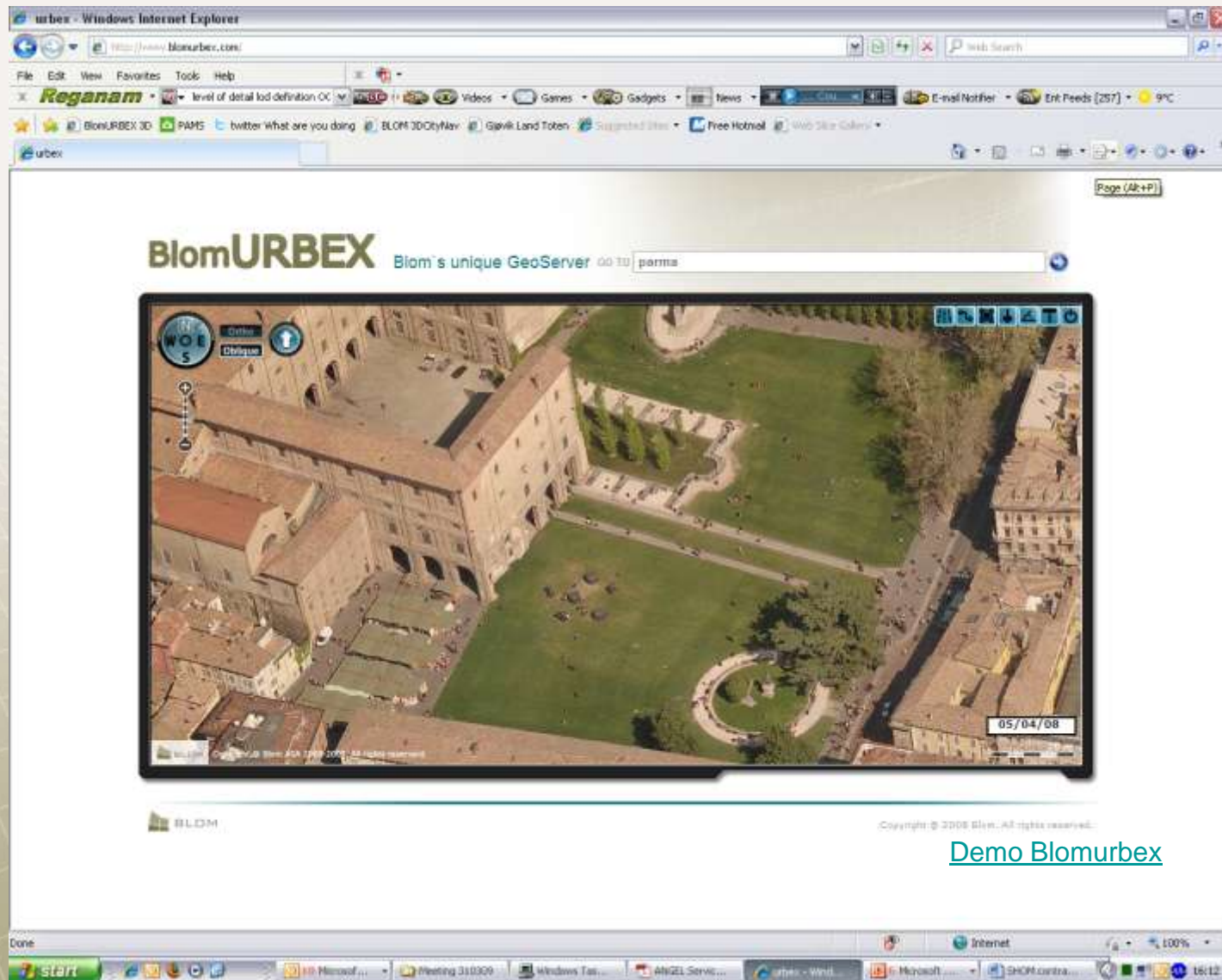
- Increase shareholder values through profitable growth
- Leading supplier of services for capturing and processing geographical information





BLOMURBEX





[Demo Blomurbex](#)

Measurement Tools

- Height measurement

BlomURBEX

Blom's unique GeoServer GO TO



Distances

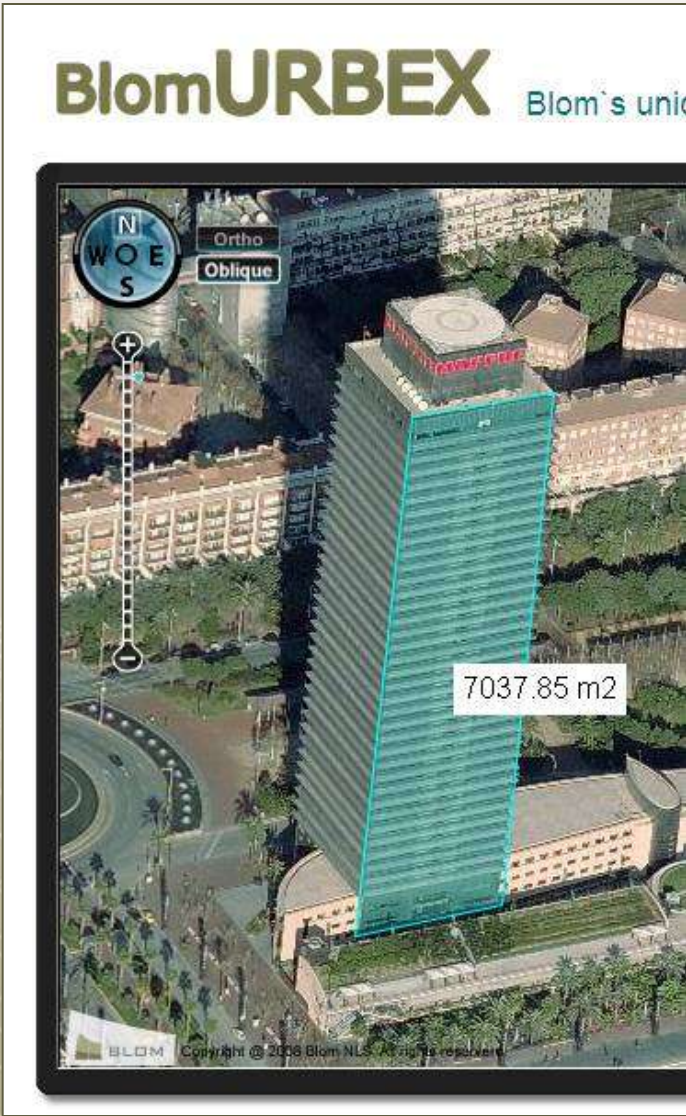
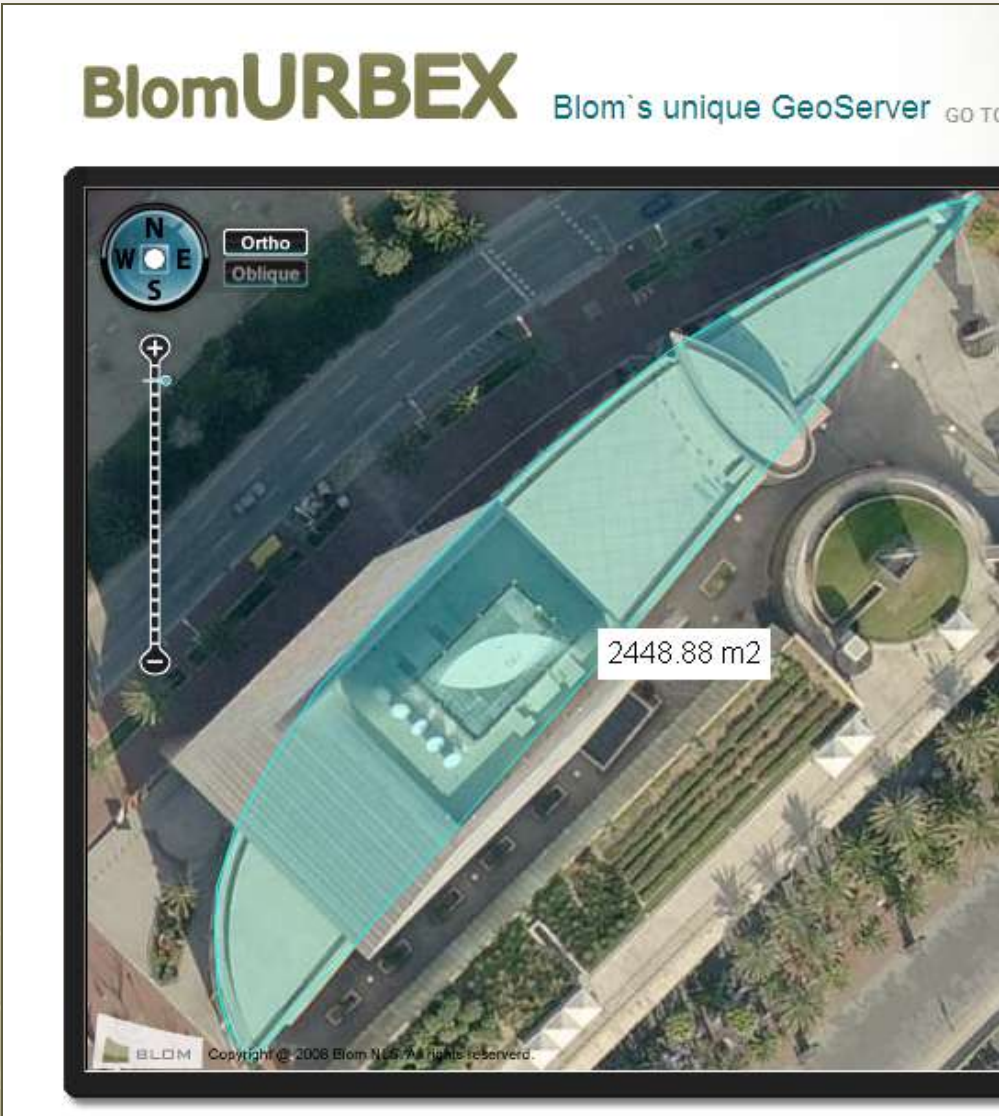
BlomURBEX

Blom's unique GeoServer GO TO



BlomURBEX image, March 2009

Areas



Computer Platforms

PC:
Local / Internet

A.P.I.



Mobile phones:
Local / Internet

S.D.K.



G.I.S.:
Local / Internet

Plug-ins



**BLOM**
SISTEMAS GEOSPACIALES S.L.U.

Ciudad:
TOLEDO

Web demostrativa de Pictometry

Aplicación JavaScript con conexión a Image Web Server de ErMapper y a servicios web desarrollados en .NET.

 Escala 1: 1000

 Zoom por defecto: 1:2 Orientación: Sur



A cadastral map overlay on an aerial photograph of Toledo, Spain. The map shows property boundaries, lot numbers (e.g., 01, 02, 03, 04, 05, 06, 07), and various annotations in red and purple. Key locations labeled include 'MINISTERIO DE INDUSTRIA (DELEGACIONAL)', 'CALLE DE LA...', 'MIGUEL', 'UNION DE', 'BAJADA CARMEN', 'CAJURRAL', 'PROVISIONAL', 'UNION CALLE DE LA', 'RUINAS RUINA', 'CALLE MIGUEL DE...', 'PISO', and 'E del Catastro'. A red crosshair is visible on the map.

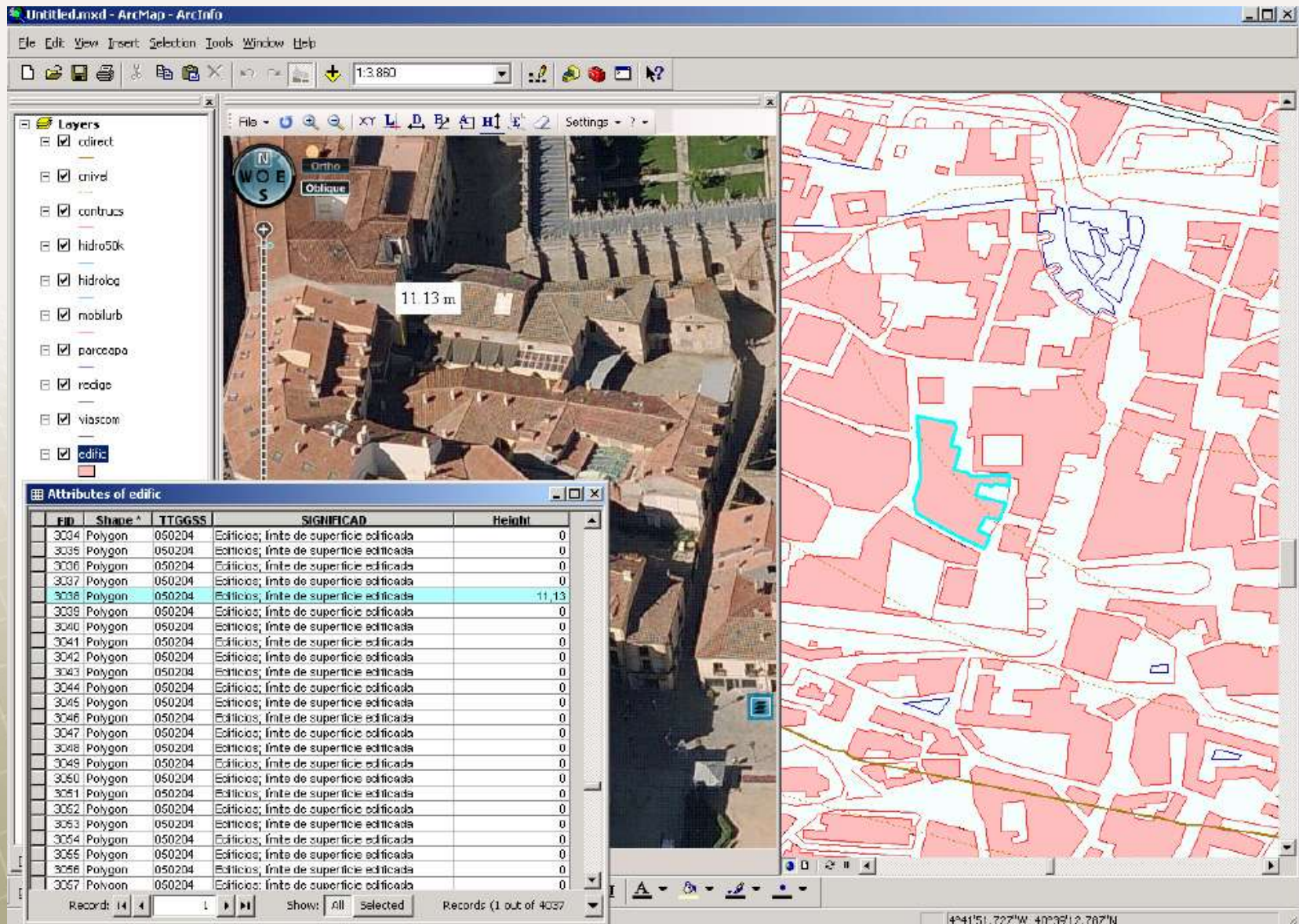
Listo



A 3D perspective view of the same urban area shown in the cadastral map. The buildings are rendered in a textured, blocky style. The red crosshair from the map is visible on the ground plane of the 3D model.

Listo

Urbex - plugins



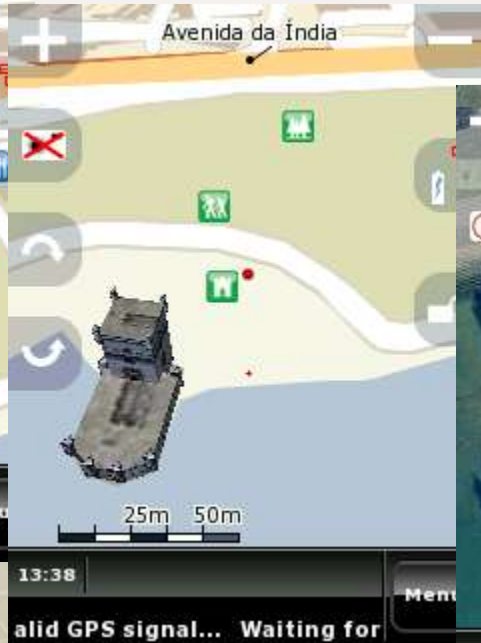
The screenshot displays the ArcMap interface with the following components:

- Layers Panel:** Lists various data layers, with 'edific' selected.
- 3D View:** Shows an aerial photograph of a city with a height measurement of 11.13 m.
- 2D Map View:** Shows a vector map of the same area with buildings highlighted in red and one building highlighted in cyan.
- Attributes of edific Table:** A table with the following columns: FID, Shape, TTGGSS, SIGNIFICAD, and Height.

FID	Shape	TTGGSS	SIGNIFICAD	Height
3034	Polygon	050204	Edificios; límite de superficie edificada	0
3035	Polygon	050204	Edificios; límite de superficie edificada	0
3036	Polygon	050204	Edificios; límite de superficie edificada	0
3037	Polygon	050204	Edificios; límite de superficie edificada	0
3038	Polygon	050204	Edificios; límite de superficie edificada	11,13
3039	Polygon	050204	Edificios; límite de superficie edificada	0
3040	Polygon	050204	Edificios; límite de superficie edificada	0
3041	Polygon	050204	Edificios; límite de superficie edificada	0
3042	Polygon	050204	Edificios; límite de superficie edificada	0
3043	Polygon	050204	Edificios; límite de superficie edificada	0
3044	Polygon	050204	Edificios; límite de superficie edificada	0
3045	Polygon	050204	Edificios; límite de superficie edificada	0
3046	Polygon	050204	Edificios; límite de superficie edificada	0
3047	Polygon	050204	Edificios; límite de superficie edificada	0
3048	Polygon	050204	Edificios; límite de superficie edificada	0
3049	Polygon	050204	Edificios; límite de superficie edificada	0
3050	Polygon	050204	Edificios; límite de superficie edificada	0
3051	Polygon	050204	Edificios; límite de superficie edificada	0
3052	Polygon	050204	Edificios; límite de superficie edificada	0
3053	Polygon	050204	Edificios; límite de superficie edificada	0
3054	Polygon	050204	Edificios; límite de superficie edificada	0
3055	Polygon	050204	Edificios; límite de superficie edificada	0
3056	Polygon	050204	Edificios; límite de superficie edificada	0
3057	Polygon	050204	Edificios; límite de superficie edificada	0



Perspective view



Landmarks



Reality view



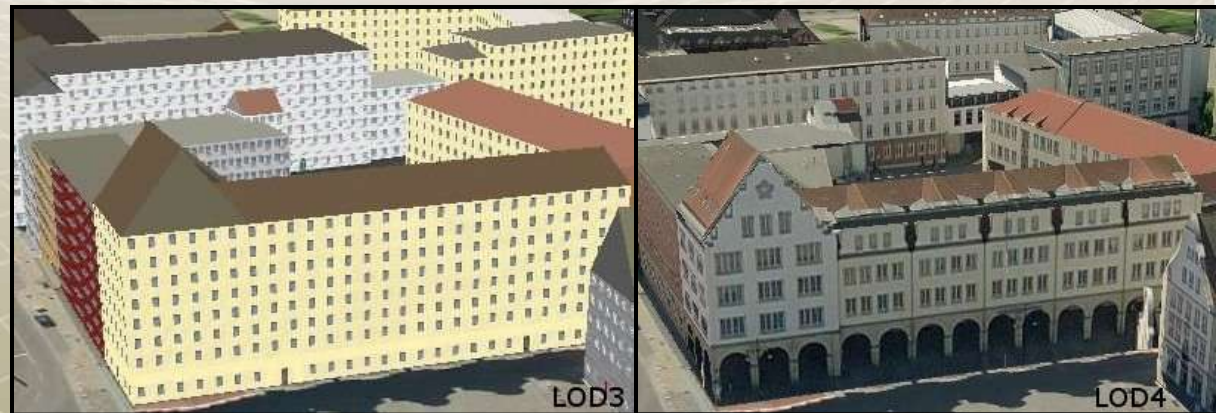
Urbex 3D

- Agreement with Tele Atlas to create the largest high-quality 3D collection in the world (?)
- Online access on BlomUrbex
- 200 cities worldwide in 2009
- Complete set of 3D map components (BLOD1, BLOD2, BLOD3, BLOD4)



BLOD1

BLOD2



BLOD3

BLOD4

- Blom provides technology to integrate 3D into desktop, web, mobile and navigation applications and devices
- Real picture facade stick to the 3D polygons







Change quality: HQ MQ LQ

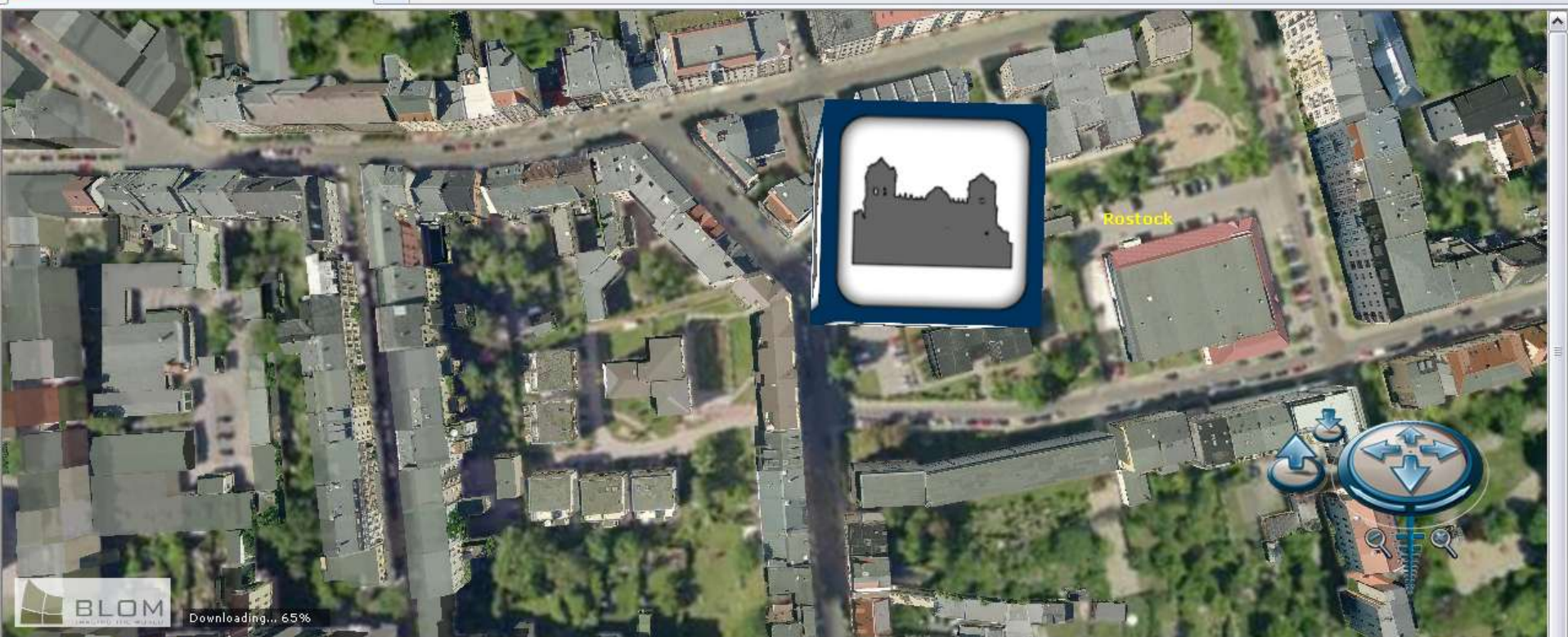
Show road: ON OFF

See Details

Go to:

LOD4 LOD3 LOD2 LOD1







Change quality: HQ MQ LQ

Go to:

LOD4 LOD3 LOD2 LOD1

Show road: ON OFF



Change quality: HQ MQ LQ

Go to:

LOD4 LOD3 LOD2 LOD1

Show road: ON OFF



Change quality: HQ MQ LQ

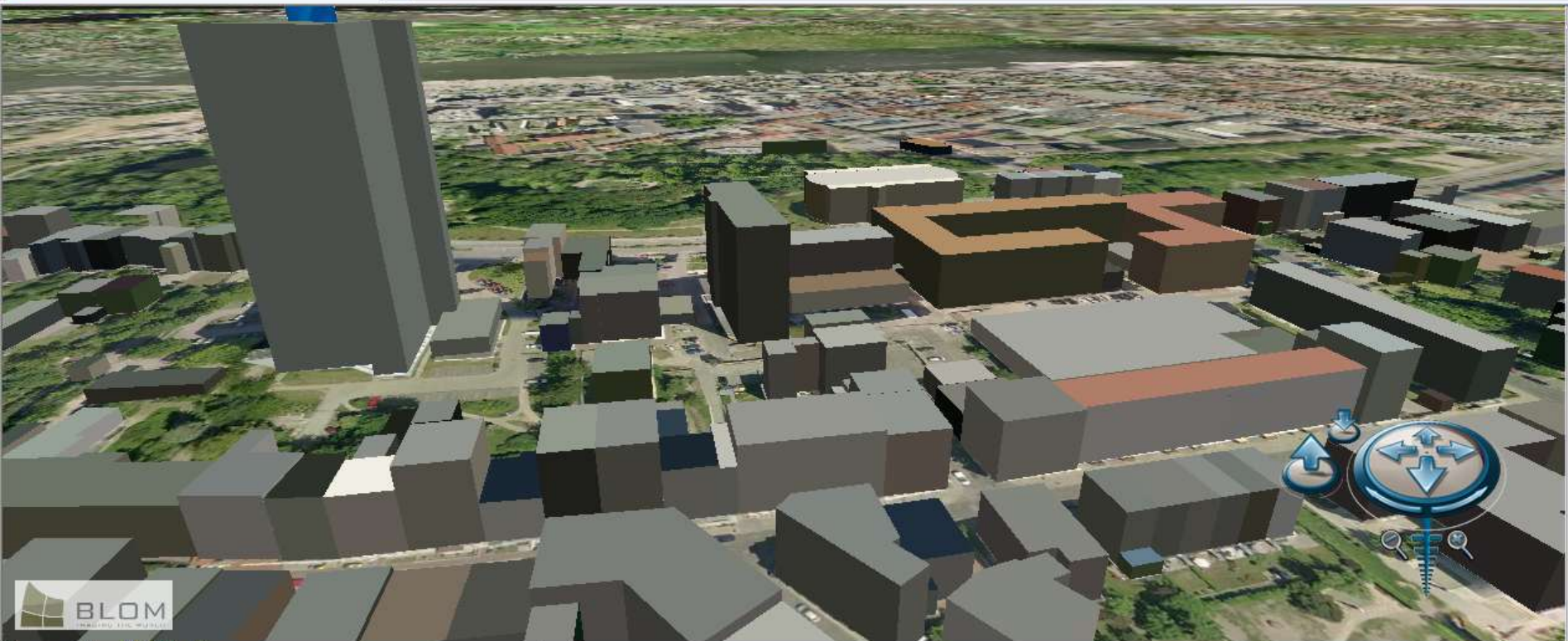
Go to:

LOD4 LOD3 LOD2 LOD1

Show road: ON OFF

javascript:blomurbex3d.addModellayer(0,'draft_lod2_04');blomurbex3d.reloadLayers();blomurbex3d.setMaxVisibleDistanceForModel

Internet 110%



Change quality: HQ MQ LQ

Show road: ON OFF

Go to:

LOD4 LOD3 LOD2 LOD1

javascript:cbloomurbex3d.addModellayer(0,'draft_lod1_04');cbloomurbex3d.reloadLayers();cbloomurbex3d.setMaxVisibleDistanceForModel

Internet

110%



- 3D Photonav® - Break-through navigation solution using oblique images
- 3D Photonav® for sale in Spain and Portugal
 - Will be launched in UK in near future
- Blom signed contracts for commercial launch
 - Blu:Sens (Spain)
 - I-Joy (Spain)
 - N-Drive (Spain / Portugal/ UK)
- Significant and widespread acceptance for Blom's 3DPhotoNav® from navigation market leaders
- Location Based Services
 - Online
 - Can be combined with 3D Photonav® solution
 - Find a friend
 - Online advertising
- Multimedia Platforms / Communities



In Conclusion



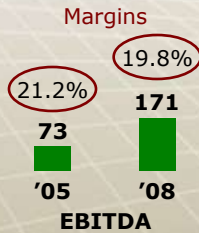
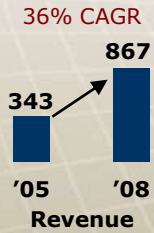
Significant Growth Opportunities



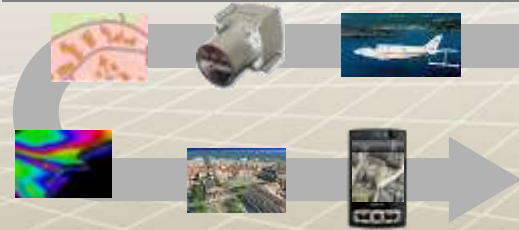
The Leading Database



Growth and Profitability Track Record



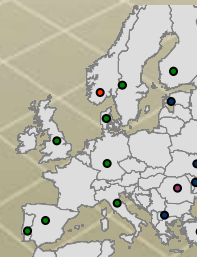
Full Value Chain Capabilities



Blue Chip Customers and Partners



Pan-European Footprint



Thank you

Q & A

Visit our web site at www.blomasa.com